

## SL3146 - MINI UV FLUORESCENT LIGHT WITH TORCH

### Features

- Small, lightweight and portable UV light and torch.
- One 6" fluorescent UV or blacklight tube.
- One penlight incandescent lamp.
- Wrist strap included.
- Four AA alkaline batteries included.
- Fluorescent tube BLB-T5 may be easily replaced.



### Caution

1. Keep the unit away from high temperatures, excessive humidity and moisture, rain or other harsh environments.
2. Always remove the batteries when not in use for long periods. Do not mix old and new batteries.
3. This device is not a toy. Children should only use it under adult supervision.
4. If the UV tube is loose or removed do not operate the torch – damage may occur!
5. Always dispose of the fluorescent tube according to your environmental agencies guidelines.

### Operation

To operate the torch press slide the switch to the left to operate the UV tube. Slide the switch to the right (towards the clear end) to operate the white light torch.

### Battery replacement

To replace batteries, slide the cover as indicated by the arrow and lift up the flap. Exchange the batteries making sure that the orientation is correct. Alkaline AA batteries should be used. Procon Technology recommends Varta alkaline batteries for longer operational life. Please contact Procon Technology regarding suitable NiMH batteries for use in this torch.

### Disclaimer

All specifications are subject to change without notice. E & O. E.

## Warnings and Handling Instructions

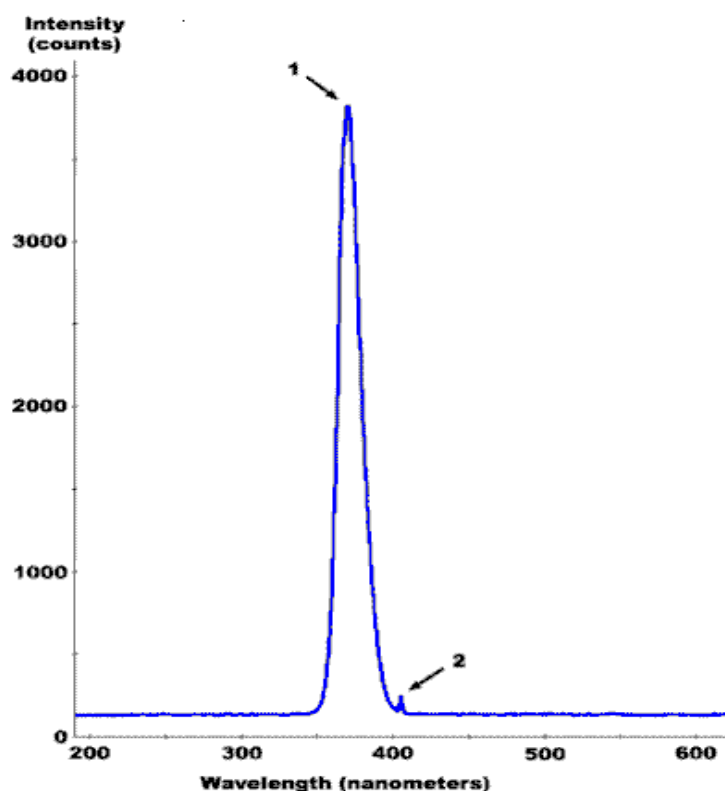
Ultra-Violet rays emitted by blacklight fluorescent tubes are not generally harmful (wavelength over 300nm), however...

1. DO NOT LOOK DIRECTLY INTO THE UV LIGHT DURING OPERATION.
2. WHEN WORKING AROUND ULTRA-VOILET RAYS FOR A LONG PERIOD OF TIME PLEASE WEAR GLASSES TO PROTECT YOUR EYES.

NOTE: The UV affect may also be enhanced using coloured goggles. Yellow is the most popular filter used but other colours may be useful depending on the fluorescent colour given off.

3. KEEP CHILDREN AND ANIMALS AWAY FROM THE OPERATING VICINITY.

Typical Spectrum



1 = 365nm, 2 = 405nm