

Instructions for inverter monitoring software

1. Connection of TN-1500 unit to PC

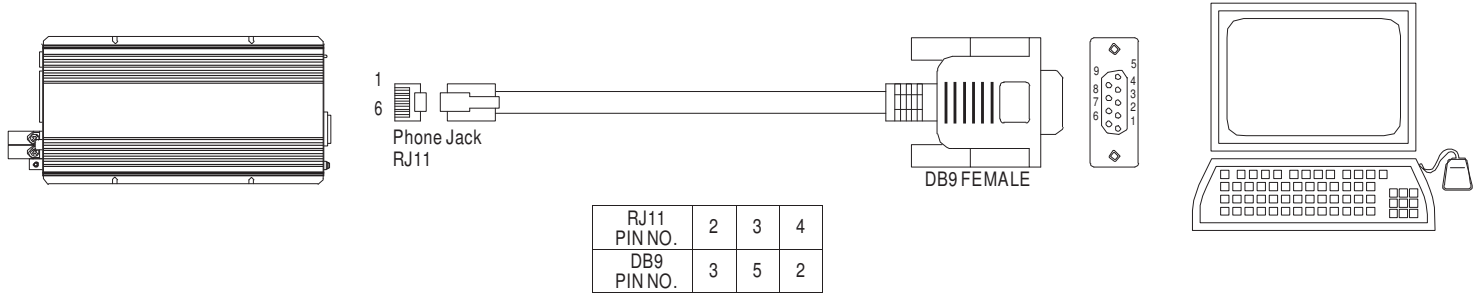


Figure 1

2. Monitoring Menu Explanation

2.1 Main Page

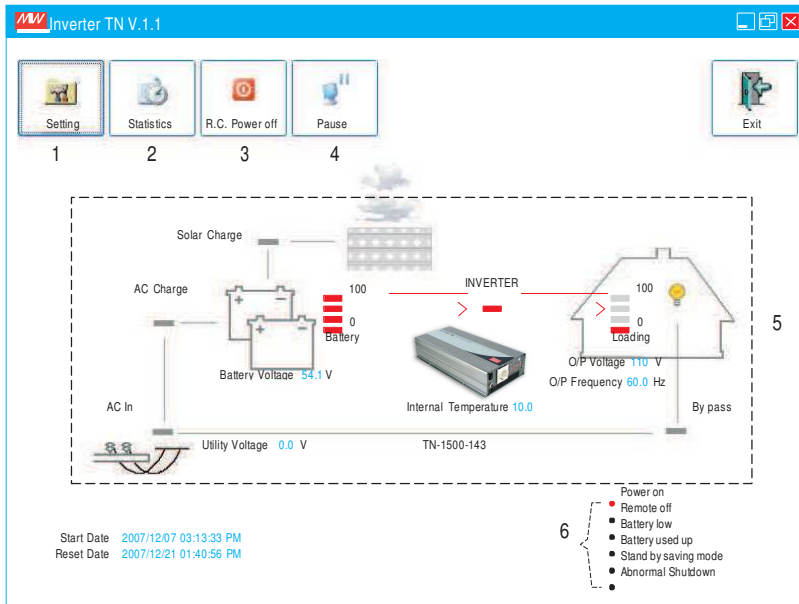


Figure 2

1. Setting: Adjustment for output voltage, charging related voltage, frequency, and operation mode. Please refer to Figure 3 for details.
2. Statistics: Calculate for the percentage of operating period for each operation mode. Please refer to Figure 4 for details.
3. R.C. Power off: Power can be turned ON or OFF at the remote location.
4. Pause: Stop refreshing the page of monitoring software.
5. Status of unit: Indicating current operating status of TN-1500.
6. Signals that display current condition of the unit.

2.2 Setup Page

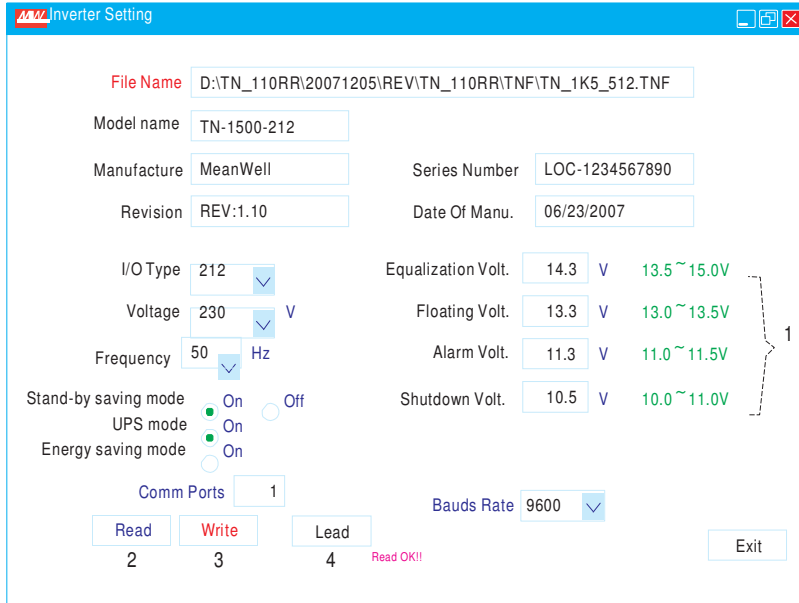


Figure 3

1. The user can adjust the settings based on the characteristics of batteries being used: Equalization Voltage, Floating Voltage, Alarm Voltage, and Shut-down Voltage. UPS Mode/Energy Saving Mode selection and AC output voltage and frequency can also be set in this page.
2. Read: Read current settings of the unit.
3. Write: Write the revised settings into the unit.
4. Load: Load in factory default settings.

2.3 Statistics Page

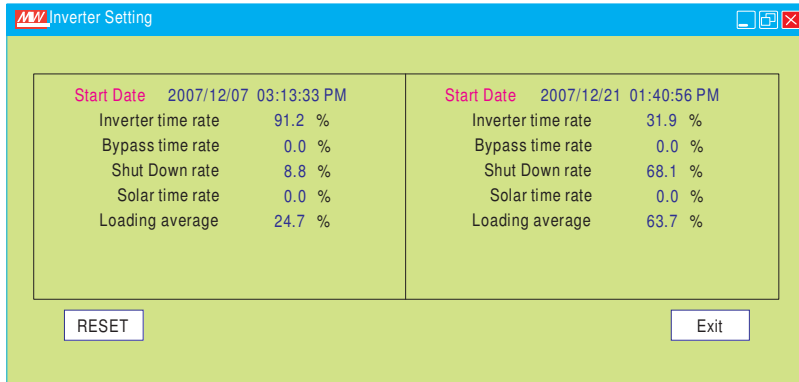


Figure 4

1. Start Date: Date of installing the monitoring software.
2. Reset Date: Date of resetting the statistics. The Start Date will not be influenced by resetting the statistics or turning off the unit.
3. Inverter time rate: Operating period of the "Inverter Mode" as a percentage of the total operating time.
4. Bypass time rate: Operating period of "Bypass Mode" (energy provided directly from the utility) as a percentage of the total operating time.
5. Shut down rate: Percentage of the total time that the unit is shut down.
* Inverter time rate + Bypass time rate + Shut down rate = 100%
6. Solar time rate: Percentage of time period that the solar charger is functioning after turning on the TN-1500 unit.
7. Loading average: Average loading since turning on the TN-1500 unit.