

# DPA-3051

## Data Adaptor (USB type)

### Software Manual

#### 1. Introduction

The first section of this manual provides detailed installation steps for the USB driver. The second part explains the usage of the application software. The DPA-3051 connects to a PC through any USB 2.0 port. Before using the device, the USB driver must be installed under Windows. It is a USB to UART bridge driver that maps the USB device to a COM port. Therefore it will add an additional COM port to your PC. After installation, the USB driver connects the DPA to the PC. The DPM application software can then be run directly from CDROM without any installation or copied to a folder on the hard-drive.

#### System requirements

Applicable Windows OS version	: Windows XP/ Windows Vista/ Windows 7, 8, 10
Memory	: at least 512MB
Hard disk space	: at least 100MB free space
Connection	: available USB 2.0 port

#### 2. USB Driver Installation

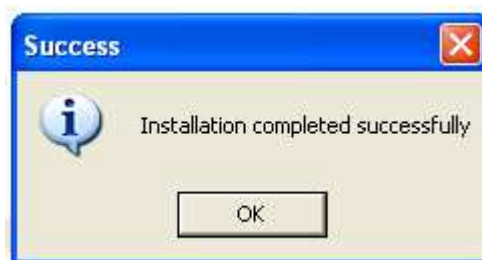
This USB driver supports Microsoft Windows 2000/ XP/ Vista and 7. It maps USB port into COM port then communicates to device using standard UART protocol. The installation program is included on CDROM.

Installation steps;

- Go to folder “USB CP210x Driver V6.5 for Win\_XP\_S2K3\_Vista\_7” in CDROM.
- Run “CP210xVCPInstaller” to install the USB driver.
- Using the default installation location, click “Install” button to start.



- Click “OK” button after installation is completed successfully.



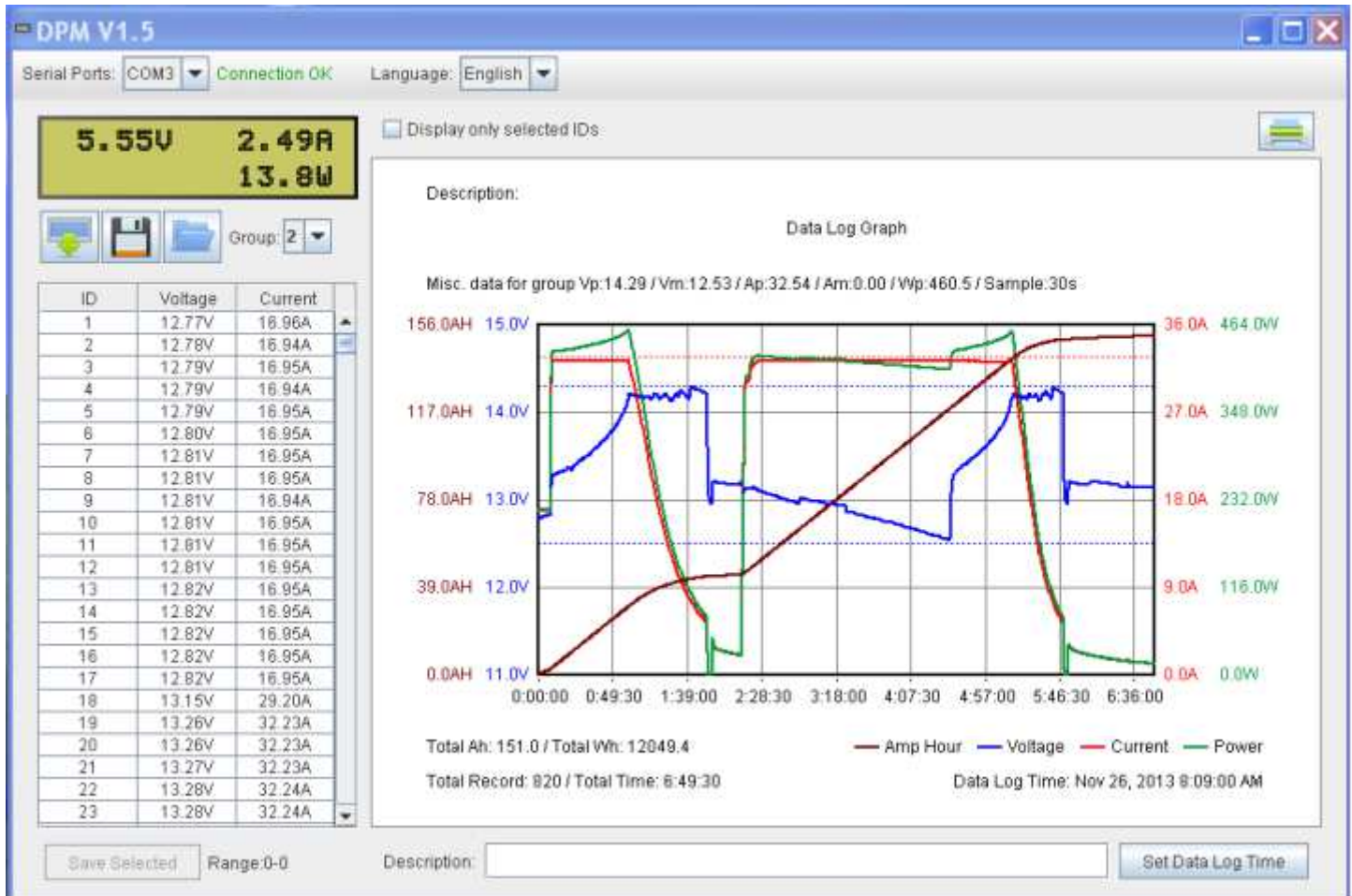
### 3. Using the DPM application software

The application software is used to retrieve data from the DPM-3232 or the DPM-3221. It displays the data as a graphical display. It allows you to zoom into a specific data range for selected analysis. The retrieved data can be saved to a CSV file. This saved file can then be loaded into other software (e.g. Excel) for further analysis.

The software can be directly run on CDROM without installation. Alternatively copy the DPM folder from CDROM to PC local disk and run it directly from the PC. The DPA and DPM should be connected correctly to PC, and powered up, before starting the DPM application software.

#### a. Starting the DPM application software

- Run <CDROM or local hard disk path>\dpm\dpm.bat. The following main screen comes up.



**b. Identifying the components on the main screen**



**c. Select the serial port to the DPA and the language preference**

- At the top-left of the main screen, is the serial port selection and interface language selection. When the serial port selected, connecting the DPA and DPM, is operating correctly the status indicates “Connection OK”.



**d. Display of real time data from the connected DPM**


- The real time data display panel is located below the Serial Port selection. It is used to show, in real time; Voltage, Current and Power of the connected DPM.



**e. Data retrieving, saving and loading**


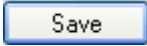
The software can be used for retrieving or uploading data from the connected DPM, saving data to a CSV file and loading data from a CSV file.

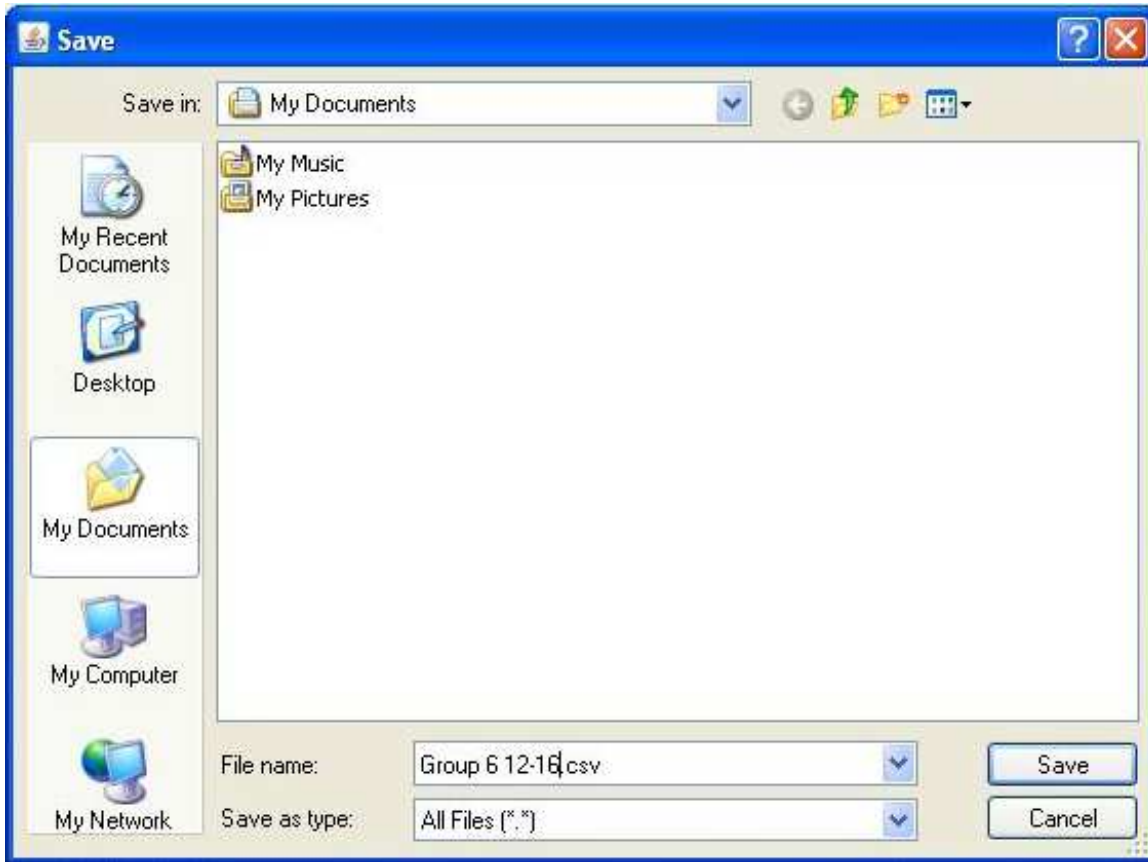
**Retrieving data**

- Click  to retrieve data from DPM.

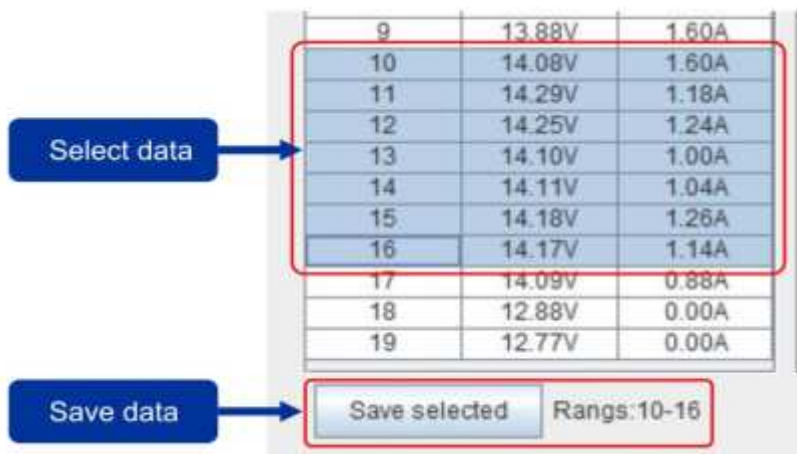
## Saving data



- Click  to save data to a CSV file.
- Select the directory and input the file name. Then click  to save the file.





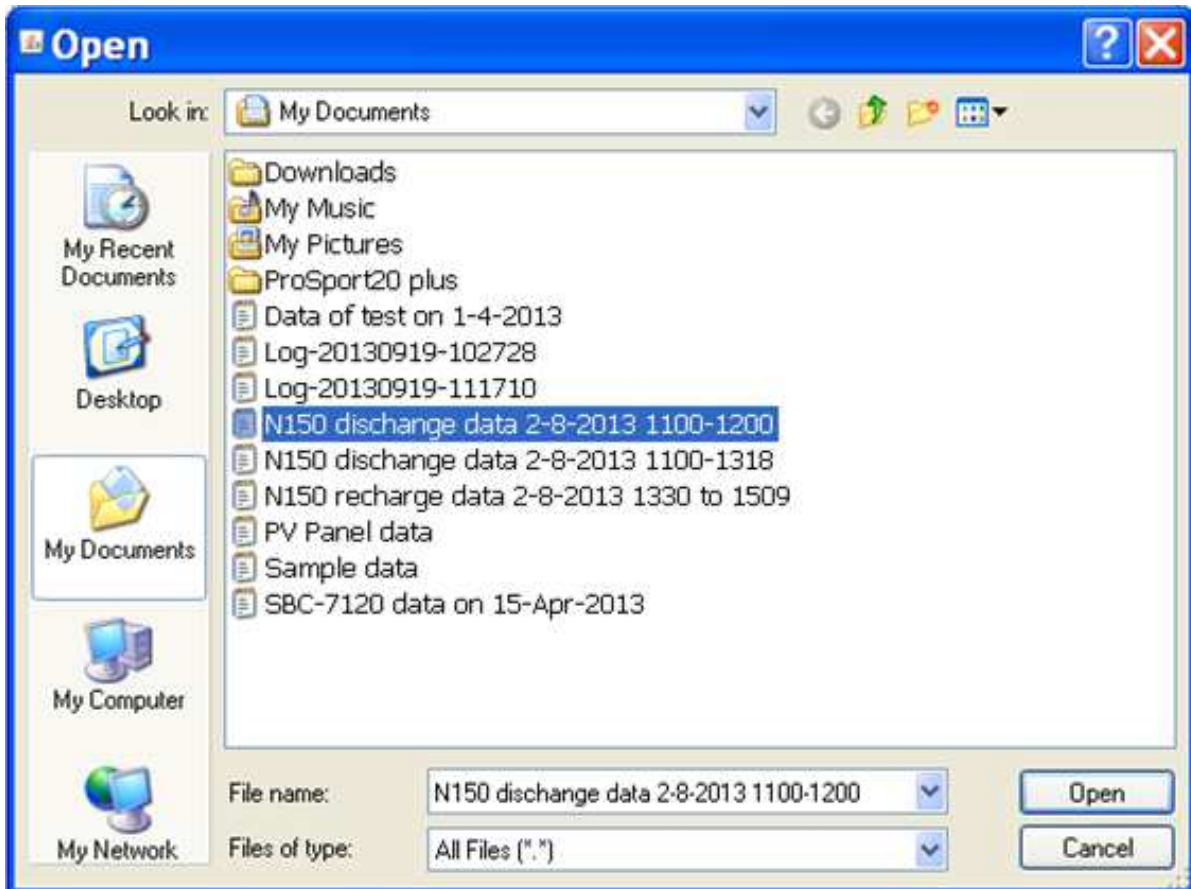
- In addition to saving all data, a partial save of selected data is also possible.
- Use the mouse or keyboard to select the data within the group for saving.
- Click on the “Save selected” button to save the highlighted data to a CSV file.



## Loading data from a csv file

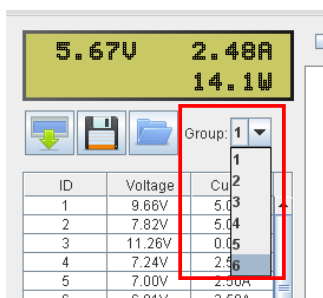


- Click  to load data from csv file
- Then select filename of the data saved previously. Then click  to open file.



### f. Selection group of data to be displayed

- The DPM can store a maximum of 20 groups of data.
- Use the pull down menu to select the group of data to be displayed

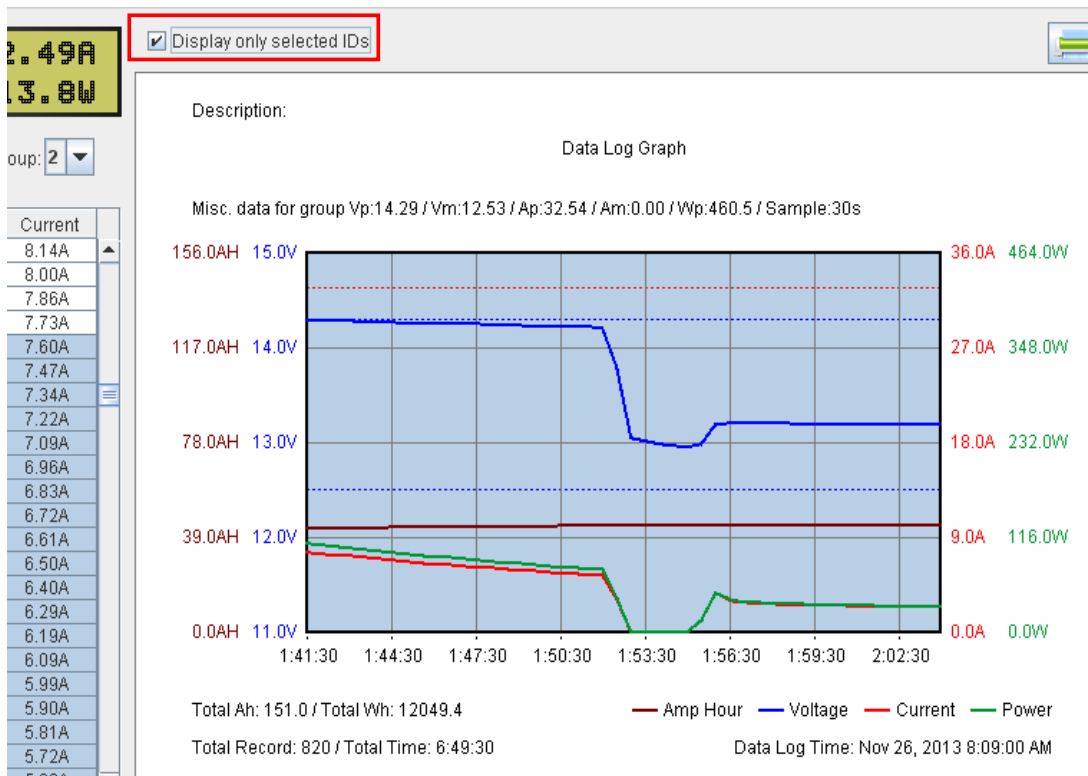


- The group 1 is the newest data group.



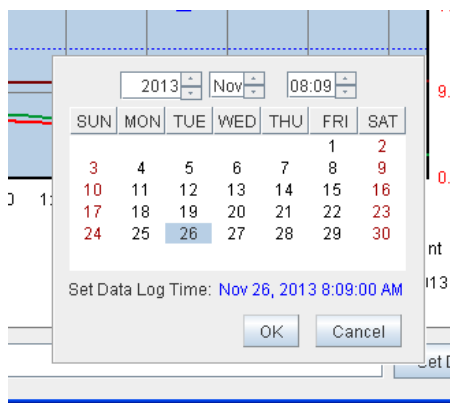
### g. Zooming in to selected data

- To zoom in to selected data, use the mouse to select the range in the data panel.
- Click “Display only selected IDs to display the selected range in the graph panel.



### h. Set Data log time

- By default, the software will use the upload time as the data log time. The data log time can be changed by clicking on the **Set Data Log Time** button.
- Then select the date on the calendar and click **OK** to confirm.




### i. Input Description for the data log file

- Input a Description for your data file.
- Directly input the text in following area:

Description:

### j. Print the data shown graphically to a printer

- Click on  , top-right corner, to print the displayed graph to a printer.