

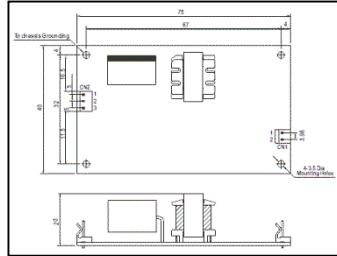
5W Single Output DC-DC Converter

- 2:1 wide input range
- 2000VAC I/O isolation
- Protection: Short circuit / Overload / Over voltage / Over temp
- Built-in EMI filter, low ripple & noise
- 100% full load burn-in test
- Low cost, high reliability
- **2 year warranty**

For detailed specs, refer to www.procontechology.com.au



75x40x20mm



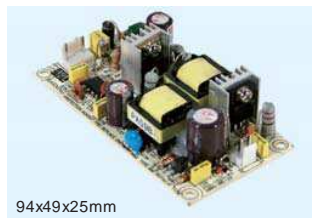
Line and load regulation $\pm 1\%$ max.
 Overload protection >105% fold back current limiting, auto-recovery
 Over voltage protection 115~135% rated output voltage
 Withstand voltage I/P-O/P: 2kVAC, I/P-FG: 1.5kVAC,
 Isolation resistance 100M Ohm (min.) @500VDC
 Working temperature -10°C ~ +60°C (refer to output derating curve)
 Safety standards Meets LVD (Low Voltage Directive), EAC TP TC 004
 EMC standards EN55032 class B, EN61000-4-2,3,4,6,8, EAC
 Connection 3P, 2P / 3.96mm pitch, Molex 5285-03, 5273-02
 Weight 0.05Kg

Model No.	Input	Output	R&N	Eff.
PSD-05-05	36~72V	5V, 0~1.0A	50mV	75%
PSD-05-12	36~72V	12V, 0~0.45A	100mV	78%
PSD-05-24	36~72V	24V, 0~0.22A	150mV	78%

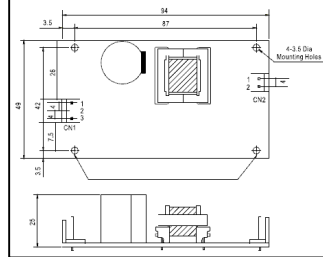
15W Single Output DC-DC Converter

- 2:1 wide input range
- 2000VAC I/O isolation
- Protection: Short circuit / Overload / Over voltage / Polarity
- Built-in EMI filter, low ripple & noise
- 100% full load burn-in test
- Low cost, high reliability
- **2 year warranty**

For detailed specs, refer to www.procontechology.com.au



94x49x25mm



Line and load regulation $\pm 1\%$ max.
 Overload protection 105~150% hiccup mode, auto-recovery
 Over voltage protection 115~135% rated output voltage
 Withstand voltage I/P-O/P: 2kVAC, I/P-FG: 1.5kVAC
 Isolation resistance 100M Ohm (min.) @500VDC
 Working temperature -10°C ~ +60°C (refer to output derating curve)
 Safety standards Meets LVD (Low Voltage Directive), EAC TP TC 004
 EMC standards EN55032 class B, EN61000-4-2,3,4,6,8, EAC
 Connection 3P, 2P / 3.96mm pitch, JST B3PIB2P-VH
 Weight 0.081Kg

Model No.	Input	Output	R&N	Eff.
PSD-15A-05	9.2~18V	5V, 0~3.0A	50mV	74%
PSD-15A-12	9.2~18V	12V, 0~1.25A	100mV	67%
PSD-15A-24	9.2~18V	24V, 0~0.6A	100mV	72%
PSD-15B-05	18~36V	5V, 0~3.0A	50mV	78%
PSD-15B-12	18~36V	12V, 0~1.25A	100mV	78%
PSD-15B-24	18~36V	24V, 0~0.6A	100mV	78%
PSD-15C-05	36~72V	5V, 0~3.0A	50mV	78%
PSD-15C-12	36~72V	12V, 0~1.25A	100mV	78%
PSD-15C-24	36~72V	24V, 0~0.6A	100mV	79%

30W Single Output DC-DC Converter

- 2:1 wide input range
- Protection: Short circuit / Overload / Over voltage / Reverse polarity (by fuse)
- 1500VAC I/O isolation
- Cooling by free air convection
- Built-in EMI filter, low ripple & noise
- 100% full load burn-in test
- Low cost, high reliability
- **2 year warranty**



101.6x50.8x30mm

DC adjustment range **5V:** 4.5~5.5V, **12V:** 11~13.5V, **24V:** 22~26V
 Line and load regulation $\pm 1\%$ max.
 Overload protection 105~150% hiccup mode, auto-recovery
 Over voltage protection 115~135% rated output voltage
 Withstand voltage I/P-O/P: 1.5kVAC, I/P-FG: 2kVAC
 Working temperature -20°C ~ 60°C (refer to output derating curve)
 EMC standards EN55032 class B, EN61000-4-2,3,4,6,8, EN55024
 Connection 3P, 4P / 3.96mm pitch, JST B3PIB4P-VH-B
 Weight 0.15Kg

Model No.	Input	Output	R&N	Eff.
PSD-30A-05	9~18V	5V, 0~5.0A	100mV	77%
PSD-30A-12	9~18V	12V, 0~2.5A	120mV	77%
PSD-30A-24	9~18V	24V, 0~1.25A	150mV	78%
PSD-30B-05	18~36V	5V, 0~5.0A	100mV	79%
PSD-30B-12	18~36V	12V, 0~2.5A	120mV	80%
PSD-30B-24	18~36V	24V, 0~1.25A	150mV	83%
PSD-30C-05	36~72V	5V, 0~5.0A	100mV	80%
PSD-30C-12	36~72V	12V, 0~2.5A	120mV	82%
PSD-30C-24	36~72V	24V, 0~1.25A	150mV	83%

45W Single Output DC-DC Converter

- 2:1 wide input range
- Protection: Short circuit / Overload / Over voltage / Reverse polarity (by fuse)
- Cooling by free air convection
- Built-in EMI filter, low ripple & noise
- 100% full load burn-in test
- Fixed switching frequency at 96kHz
- Low cost, high reliability
- **2 year warranty**



127x76x30mm

DC adjustment range **5V:** 4.5~5.5V, **12V:** 10.8~13.2V,
24V: 21.6~26.4V
 Line and load regulation $\pm 1\%$ max.
 Overload protection 105~160% shut down; re-power on to recover
 Over voltage protection 115~135% rated output voltage
 Withstand voltage I/P-O/P: 1.5kVAC, I/P-FG: 1.5kVAC
 Working temperature -10°C ~ 60°C (refer to output derating curve)
 Safety standards EN60950-1 CB approved by TUV, EAC TP TC 004
 EMC standards EN55032 class B, EN61000-4-2,3,4,6,8, EN55024
 Connection 2P, 6P / 3.96mm pitch, Molex 5277-02, 5273-06
 Weight 0.19Kg

Model No.	Input	Output	R&N	Eff.
PSD-45A-05	9.2~18V	5V, 0~6.0A	100mV	74%
PSD-45A-12	9.2~18V	12V, 0~2.5A	120mV	79%
PSD-45A-24	9.2~18V	24V, 0~1.25A	150mV	80%
PSD-45B-05	18~36V	5V, 0~9.0A	100mV	77%
PSD-45B-12	18~36V	12V, 0~3.75A	120mV	82%
PSD-45B-24	18~36V	24V, 0~1.875A	150mV	85%
PSD-45C-05	37~72V	5V, 0~9.0A	100mV	80%
PSD-45C-12	37~72V	12V, 0~3.75A	120mV	83%
PSD-45C-24	37~72V	24V, 0~1.875A	150mV	86%