

LA CORNUE



The 1908

THE QUINTESSENCE OF AN IDEA

Many a cooking enthusiast has sighed at the sight of a La Cornue vaulted oven, without being able to invest in a Cornuchef® or in the prestigious Château® La Cornue. It is with them in mind that we have designed the tour de force that is the 1908. We named it the 1908 because that is the date our brand was created and the date of our first exclusive vaulted gas oven which does not dry out food was launched.



The 1908: the purist's choice

The 1908 is a robust stove-top proudly manufactured from noble materials in our Saint-Ouen l'Aumône workshops by La Cornue "Companions". The 74-litre vaulted oven with dual energy gas and electric grill is fitted in all our most deluxe ovens. Its front is immediately recognisable by its solid oven door, which is identical to that on the Château® La Cornue ovens.

The 90 cm cook-top is equipped with 5 professional, powerful, extra-large burners. An optional hot-plate can be fitted over the central burner for prolonged simmering or to keep several pans warm at once.



A unique culinary advantage

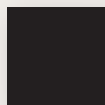
The exclusive La Cornue gas oven naturally represents the heart of the 1908, the heat circulation is natural, equal and radiant. The solid metal door, which is resistant to warping caused by extreme variations in temperature, is manufactured with great precision so that the oven can be sealed hermetically and the precious ambient humidity can be preserved.

For this reason, meat and fish and generally speaking any dish cooked in these optimal conditions have an incomparable flavour. Whatever your culinary masterpieces, the 1908 will give them an added delicacy and a new subtlety.

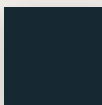
Oven with internal light and equipped with an electric grill / Storage drawer at the bottom

Guarantee: 3 years parts and labour

The 1908 is available in 7 colours



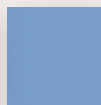
Brilliant Black



Matt Black



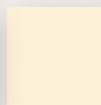
Dark Navy Blue



Paris Blue



Stainless Steel



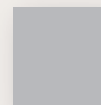
Ivory



Pure White



Polished brass and brushed stainless steel

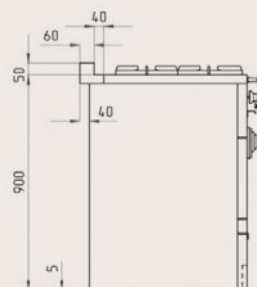
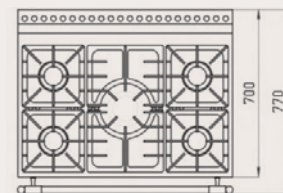


Brushed stainless steel and nickel



Copper and brushed stainless steel

And 3 trims



Ateliers La Cornue

14, rue du Bois du Pont - Z.I. Les Béthunes
95310 Saint Ouen l'Aumône - France
Tel.: 33 (0)1 34 48 36 36 - Fax: 33 (0)1 34 64 32 65

E-Mail: a.table@la-cornue.com
www.lacornue.com

Non-binding document.
Model subject to modifications without notice.
Enamel colours shown are indicative only